

Mesotherapeutic solution
with Biomimetic Peptides, Growth Hormones
for Stretch Marks reduction in Men, Women

Stretch marks management

- Stretch marks are atrophic scars on the skin. They can be linear or fusiform, are of varying length, shiny in appearance and have well defined borders.
- They are caused by alterations to the skin's conjunctive tissue as a consequence of structural modifications to the collagen and elastin fibres.
- They start off reddish in colour and then fade over time to off-white.

XTRA

ANTI STRETCH MARKS



Stretch marks removal treatment with biomimetic peptides.

COMPOSITION

- Centella,
- Organic Silicone,
- Rutin,
- Hyaluronic Acid,
- Alaria Extract,
- Tripeptide-30 And
- Tetrapeptide-7.

Centella (triterpenoid saponin content):

- It acts on several different levels, its considerable healing capacity is worth special mention.
- It works by stimulating cell mitosis and boosting collagen biosynthesis in the connective tissues.
- It also has anti-inflammatory and revitalizing properties and is a capillary protector. It helps activate the cells in the connective tissue, acts as a regenerating agent, enhances the binding capacity of the amino acids that form part of the collagen structure and improves the elasticity of the blood vessel walls.

Organic Silicon:

- Silicon is a structural element of connective tissue. This element is fundamental in the composition of the macromolecules found in elastin, collagen, proteoglycans and glycoproteins and it works by boosting and stimulating their regeneration.
- Silicon regulates, normalizes and stimulates cell metabolism and cell division.
- It induces and regulates fibroblast proliferation.

Rutin:

- It has a Vitamin P-like effect, which is to say it enhances capillary resistance and
- decreases its permeability. A lymph kinetic agent, it is also used as an adjuvant factor
- when treating areas of trophic skin.

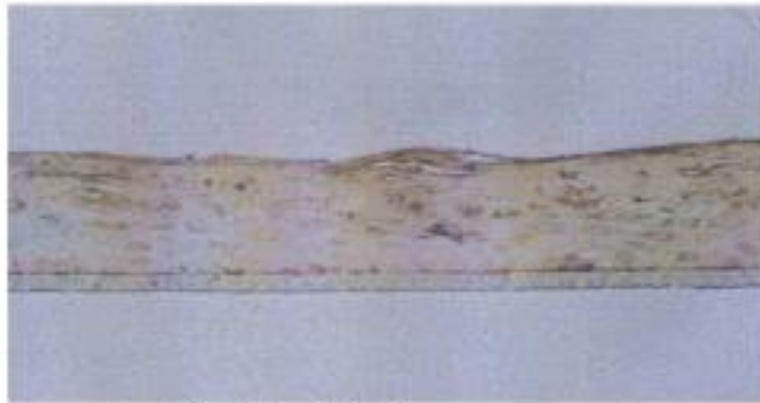
Hyaluronic Acid:

- Besides its well known capacity for water retention, it is also used to substitute lost collagen, to stimulate the fibroblasts used when synthesizing this protein and to restore damaged structural bridges.

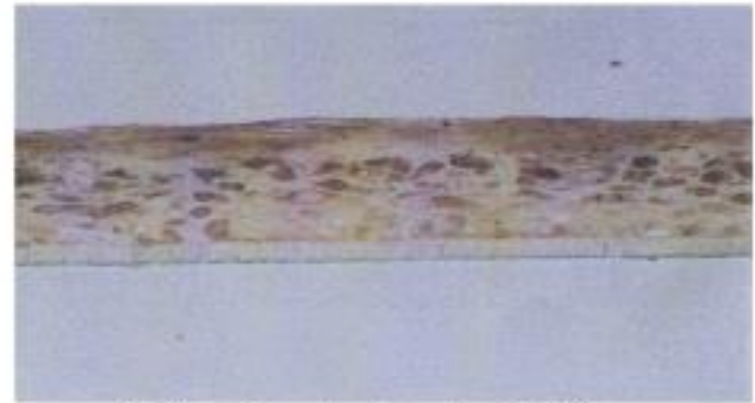
Alaria Extract:

- This has a powerful anti-collagenase and anti-elastase effect as it is rich in fatty acids that also help strengthen the skin's hydro lipid barrier, protecting this from collagen and elastin degradation.
- An anti-oxidant and anti-free radical agent.
- It stimulates the production of collagen III, IV and VII.
- It stimulates the synthesis of matrix and perimembranous proteoglycans
- It increases the production of ATP, ADP and AMP.
- It stimulates the synthesis of glycosaminglycans and Hyaluronic acid.

Optimal levels of keratogenesis

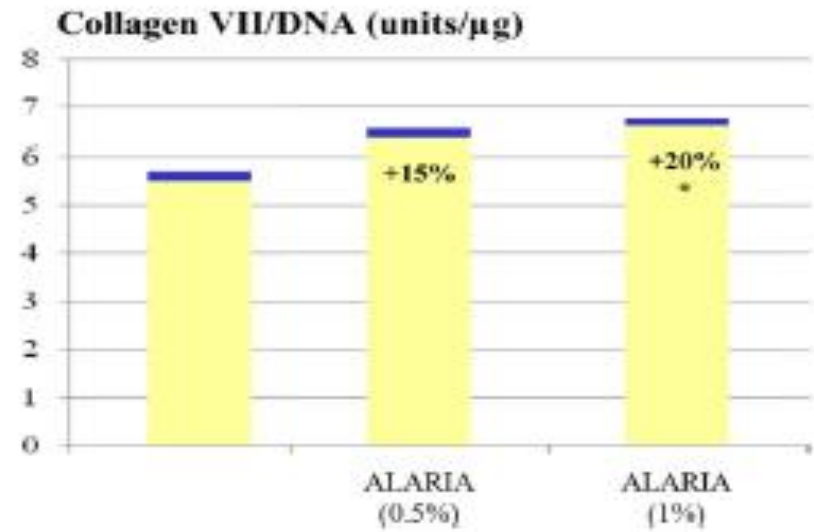
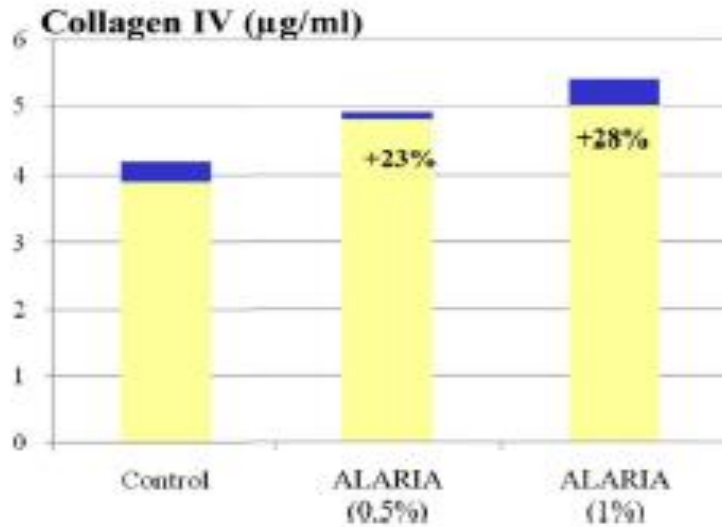


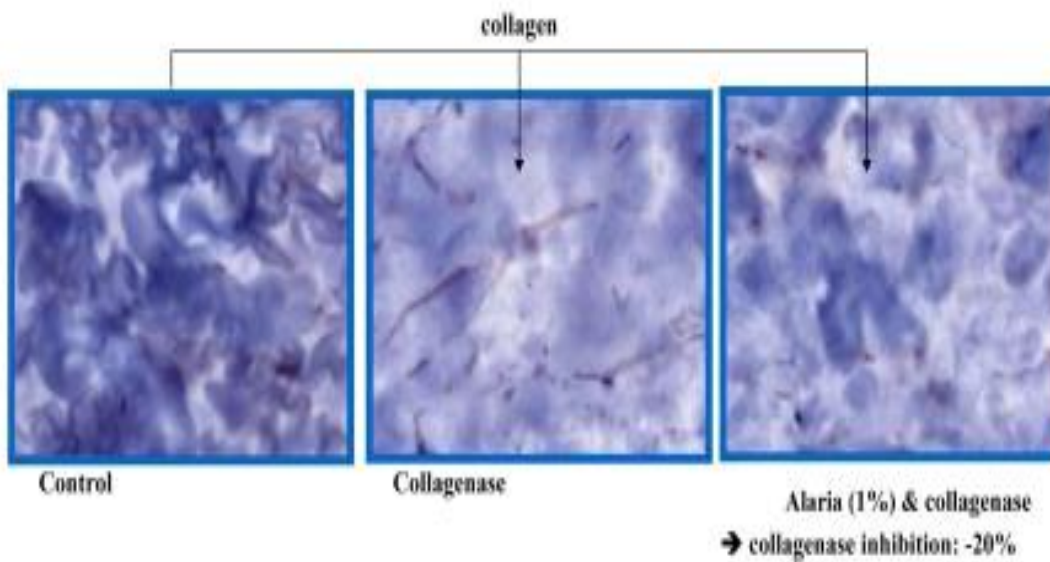
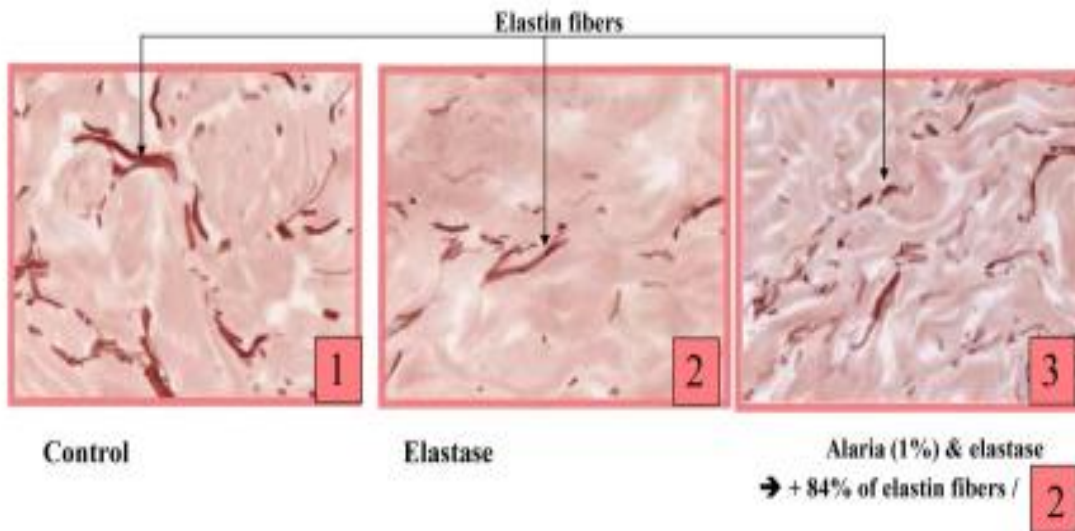
Control epidermis



Epidermis + *Alaria esculenta* (1%)

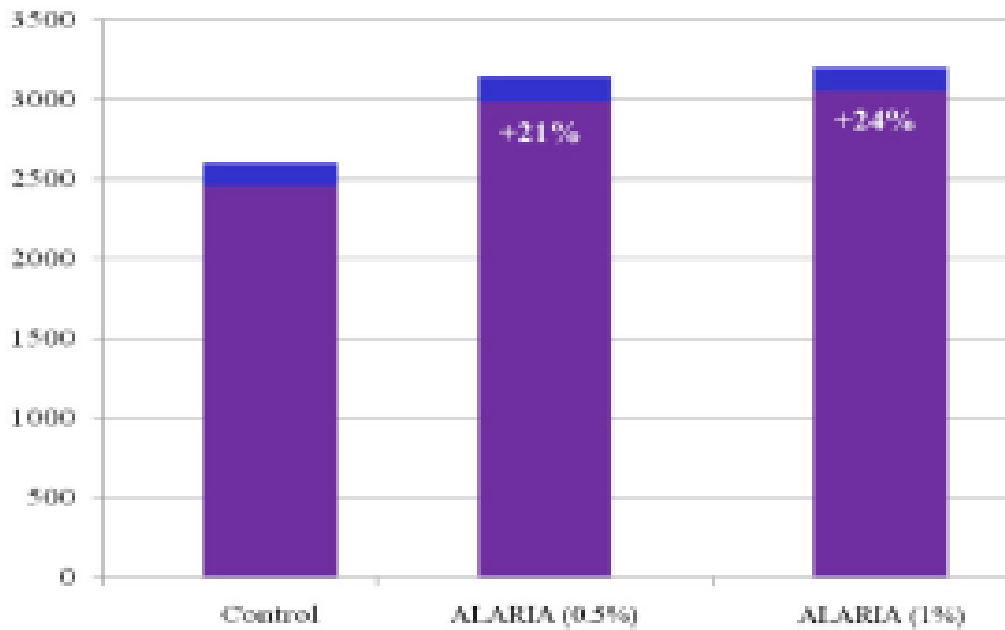
Stimulates Collagen IV and VII



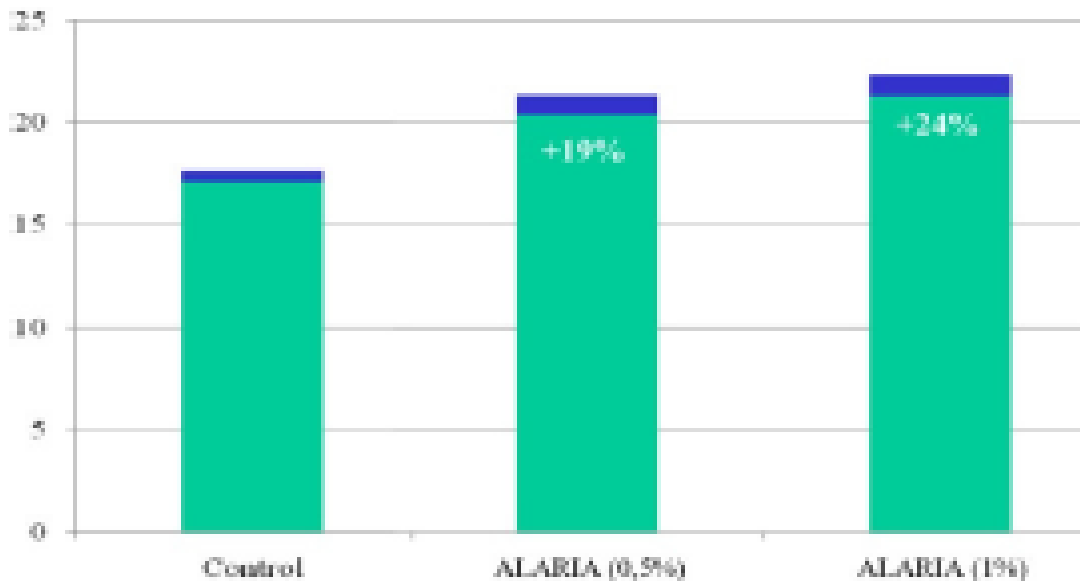


Alaria prevents the degradation of elastin by inhibiting Elastase

Alaria helps avoid collagen degradation



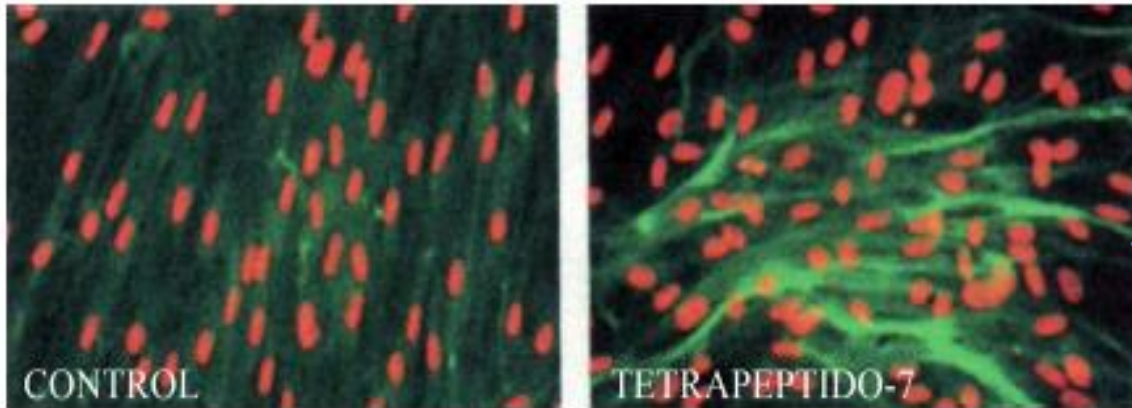
Alaria increases the
synthesis of collagen III
(+24%)



Alaria moisturizes skin
tissue by stimulating the
synthesis of HA (+24%)

Tetrapeptide -7:

- This combats the degradation of the extracellular matrix linked with the formation of stretch marks: it antagonizes the destructive effects of the proteolytic enzymes and stimulates the synthesis of matrix molecules.
- It helps reduce fibre fragmentation and considerably enhances the reconstruction of the network of papillary dermal fibres.
- Its repairing effect visibly enhances the skin improving its tone and elasticity.



Tripeptide-7 stimulates collagen synthesis

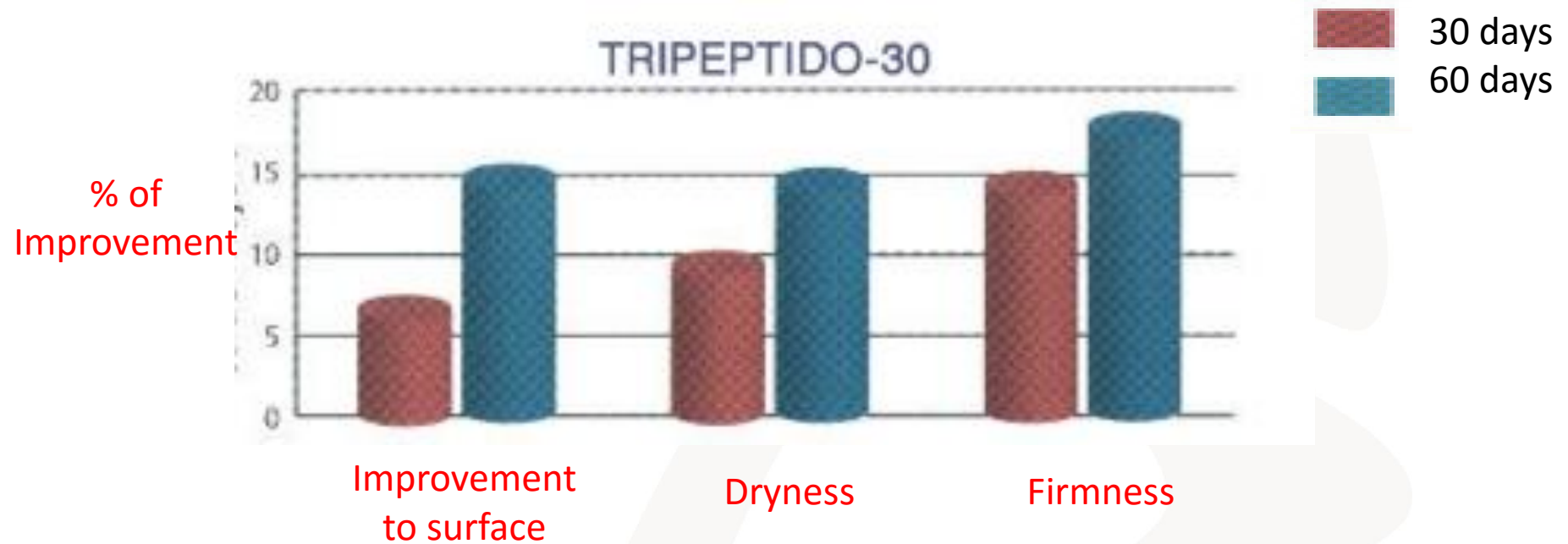
Repairs the Epidermis

After 2 months	Inside forearm	Outside forearm
Thickness	-9.8% to -23%	-9.8% to -33%
Density	+11.4% to +44%	+11.5% to +45%
Reduction in age	-3.8 years	-5.5 years

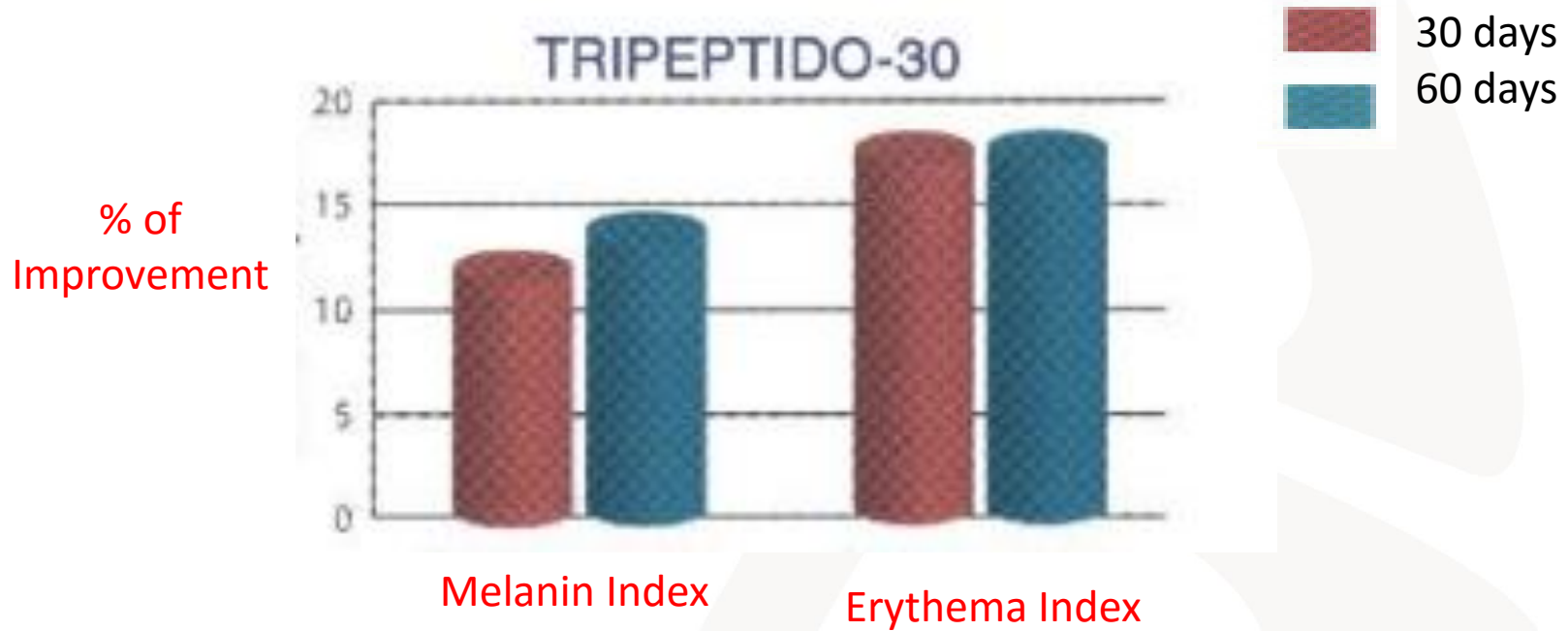
Tripeptide-30

- This inhibits the degradation of the components in the Extracellular Matrix (EMC), reducing skin tension, helping the skin heal, increasing its elasticity, reducing erythema and helping the stretch marks fade in colour.

Instrumental assessment of the skin surface

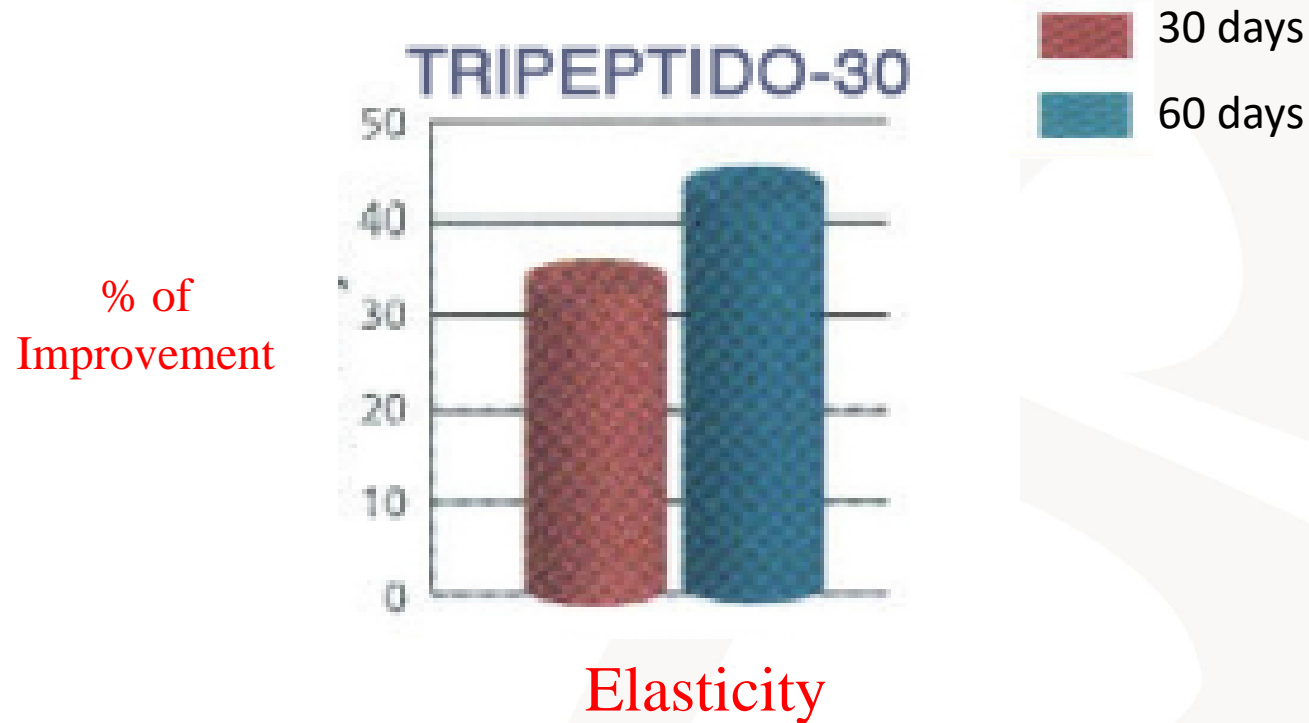


Assessment of the change in colour



The melanin and erythema indexes were assessed using the Mexameter MX18

Assessment of the change in skin elasticity



The elasticity of the skin was measured using a soft mini three tool

INSTRUCTIONS FOR USE

- **TRADITIONAL MESOTHERAPY:**
- To administer the product, a CE-marked syringe, a jet injector for subcutaneous administration or a micro needle roller must be used.
- The treatment should be carried out over a series of consecutive sessions if we are to achieve the required level of effectiveness. The area to be treated must be properly disinfected.

- **Normal Treatment**

- 1st Phase: 1 session a week during the first month
- 2nd Phase: 1 session every 2 weeks during the second month
- 3rd Phase: 1 session a month during the third month.
- 4th Phase: 1 session every 2 or 3 months during 6 months

- **Special - Intensive Treatment**

- 1st Phase: 2 sessions a week during the first month
- 2nd Phase: 1 session a week during the second month.
- 3rd Phase: 1 session every 2 weeks during the third month.
- 4th Phase: 1 session every 1 or 2 months during 6 months.

Patient 35 years old, after twin pregnancy.



Treatment carried out with *Xtra* ANTI-STRETCH MARKS SIMILDIET™ during 3 months/1 session per week.

Overall Actions of the Components

- They **regenerate** the skin by providing active ingredients that revitalize the collagen and elastin fibres, enhancing the creation of the structural dermal bridges that help restore damaged skin.
- They also **restore** the hydro lipid structure, increasing cell mitosis.
- The product **reactivates** the vascular and lymphatic activity and provides anti-oxidants which help eliminate intracellular toxic substances, bringing back bright, smooth, healthy skin.
- The skin gradually **recovers** its natural colour and progressively blends in with the surrounding skin.
- **Stabilization:** The cell regeneration process and the activation of collagen and elastin fibre production by reactivating the fibroblasts and microcirculation makes it possible to maintain the obtained result over time.

PROTOCOL

- Combination of Anti Stretch Marks can be permuted with micro needling or Fractional Skin resurfacing. (monthly once with meso every 15 days)

Thank you

